



Your supplies:

5 yards of patterned 100% cotton—Please wash your fabric before cutting.

5 yards of solid Poly cotton (must be poly-blend of 60% cotton and 40% poly or linen blend)
—Please wash your fabric before cutting.

It is estimated that 100 masks may be made from 5 yards of patterned and 5 yards of solid material.

Corded elastic—to be cut into 6.5" pieces

Twist tie—to be cut into 4" pieces

Spool of thread

Please wash all your fabric before you begin to cut. Patterned fabric is 100% cotton while the solid color is a blend (60% cotton and 40% poly or linen blend). Get the worst of the shrinkage out of the way before you begin to cut.

The two different fabrics serve a purpose. Studies show that using two different types of fabric is more effective in stopping microbes. All masks must have a solid side and a patterned side. Solid for the inside—patterned for the outside.

These **will not be disposable** but will be worn and laundered by hospital staff.

Page 7 has illustrations of the pattern pieces. If you are viewing this packet you may use the Men's or Women's pattern piece provided on tagboard.

If you are downloading these instructions your pattern pieces are in associated .pdf files.

Your pattern must be downloaded and printed from the .pdf file to maintain scale.

All seam allowances are ¼".

The pattern demonstrated within these instructions was selected by hospital staff. Nothing can penetrate as they are fully enclosed and this style along with protective eyewear covers the face.

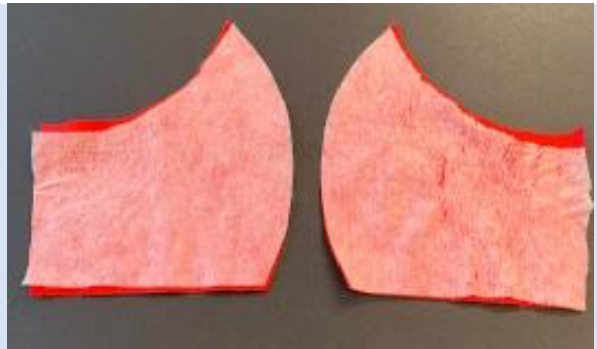
Cut two pieces of the patterned fabric, two of the solid and two of the Pellon lining.

Pieces shown are all the same size; the angle of the photo causes the bottom ones to appear larger.

Pellon® PLF36 Fusible Interfacing is an ultra lightweight interfacing for light to medium-weight fabrics.



The Pellon is fusible so using a warm (not hot) iron, fuse the Pellon to the back of your lining pieces.



Sew your matching pieces together on the center seam.



Top stitch the center seam on both inner and/or outer layer to add stability (optional).

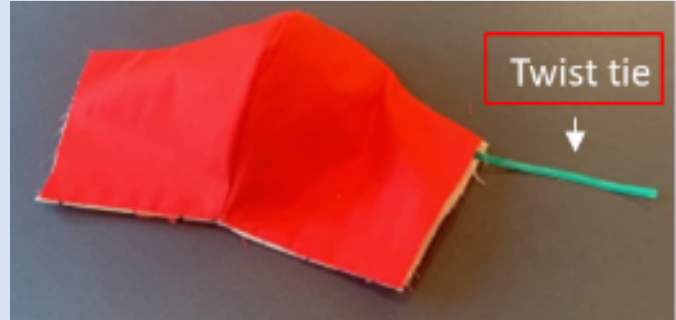
Turn right side out, press.



Twist Ties: Here are a few different approaches to the twist tie

#1: Place the outer layer and the inner layer right sides facing; sew top and bottom seams ($\frac{1}{4}$ " allowance) leaving the ends open. These ends will be nearest the ear. Turn right side out and press.

Cut a 4" piece of the twist tie.
Manually place this inside, up across what will fit on the bridge of the nose.



Zig zag this piece in place. Starting on one side and zig zagging across the entire top seam, catching twist tie on the bridge of the nose to add stability.

Twist tie



#2:

Stitch the top seam at $\frac{1}{4}$ ". Then come back and zig zag the twist tie to the top seam allowance (that way you can see exactly where it lies).



Now stitch the bottom seam. Turn right side out, and top stitch about $\frac{1}{4}$ " along both top and bottom seams.



#3:

Stitch the top seam. Now tag it onto the inside layer with a zig zag stitch.

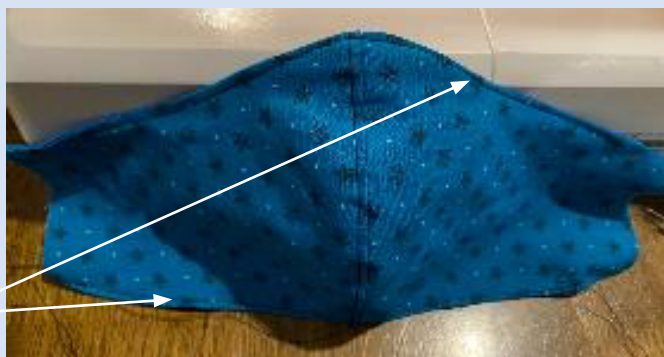


Fold the pieces right sides facing and sew the bottom seam.



Turn it right side out and top stitch along the top, making sure the tie is in place along the seam. Then top stitch the bottom.

Topstitch



All you see inside is the little zig zag spot.



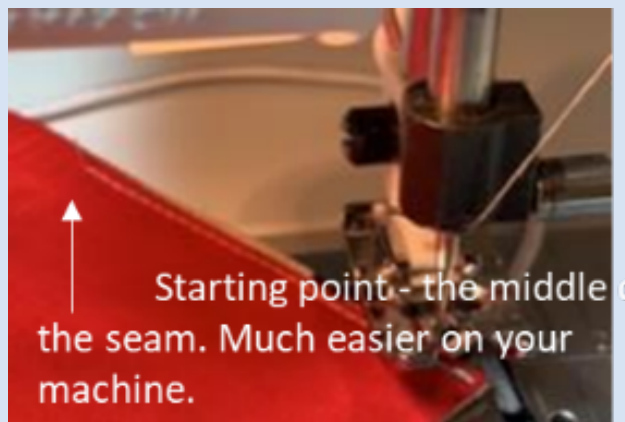
Finishing the sides.
Fold in the raw edges roughly a ¼" and press.



Cut two pieces of 6.5" elastic. These will go around the ears. Put the ends of the elastic pieces in the top and bottom of the open side seam.



Starting in the center of the seam, (your sewing machine will thank you for this) sew down to the end crossing over the elastic, turn the piece around and sew up the seam crossing over the elastic at the other end and come back to meet your starting point. This will secure the elastic.



Repeat on the other side.

Now top stich your bottom seam and you're done!



Finished Outside



Finished Inside



Please launder your finished masks. This second laundering will show you if your seams are going to hold and if the elastic is stitched in well.

One of our seamstresses modeling her completed mask.



Special thank you to the St. Anthony Hospital Women's Auxiliary for compiling this information.

These are illustrations of the pattern pieces and obviously not to scale.

In order to maintain scale, you must download the .pdf.

Or be handed a full size print copy that would have come from the .pdf.

